

# LIFTING CROSS FOR BIG-BAG

CR-B



Secure handling.  
Approved by a control organization.  
2 models.

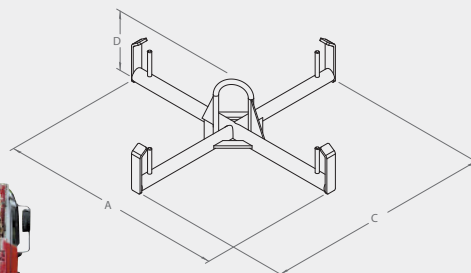
**⚠ ATTENTION :** Prior to use, accessory + forklift / crane acceptance procedures must be carried out by your authorised inspection body.



## CROSS LIFTING BY CRANE

Cleats restraint  
straps (height 100 mm)

Maximum load :  
1700 kg



### CHARACTERISTICS

#### Ref. CRP40000

- For loading and unloading bigbag with crane truck or handling hoist
- Manufacturing in round tube  $\varnothing$  45 mm
- For custom designed products, contact us

Load kg	A	C	D	Weight kg	Painted ref.
1700	915	915	230	18	CRP40000

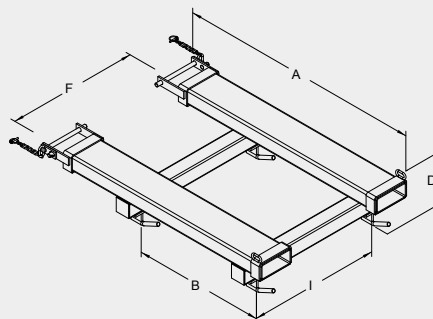
Dimensions in mm for basic model (for guidance only).

## LIFTING FORKS GRIP



Ref. CRP50000  
4 hooks  
with safety latch

Ref. CRP51000  
4 hooks  
with quick release



Maximum load :  
2000 kg

### CHARACTERISTICS

#### REF. CRP50000 & CRP51000

- Direct mounting on forks with fork heel locking device
- Fork sleeves 170 x 70 mm and fork spacing (F) can be modified on request

Load kg	A	B	C	I	D	F	Weight kg	Painted ref.
2000	1300	700	1000	700	250	700	80	CRP50000
2000	1300	700	1000	700	280	700	80	CRP51000

Dimensions in mm for basic model (for guidance only).